

## TOUCHLESS SECURITY SCREENING

# Evolv Express®



**Fast, Efficient Threat Screening:** Screens 3,600 ppl/hr, 10X faster than metal detectors. Enables a line-free security experience.



**Respectful & Touchless Experience:** Smart enough to differentiate between a gun and everyday personal items. No need to empty pockets or bags, visitors walk right through in a hassle-free, touchless experience.



**Easy to Operate:** Real-time image-aided alarms show guards exactly where the potential threat is on a person or in their bag.



**Operational Efficiency:** Staff can be optimized or redeployed based upon demand and needs.

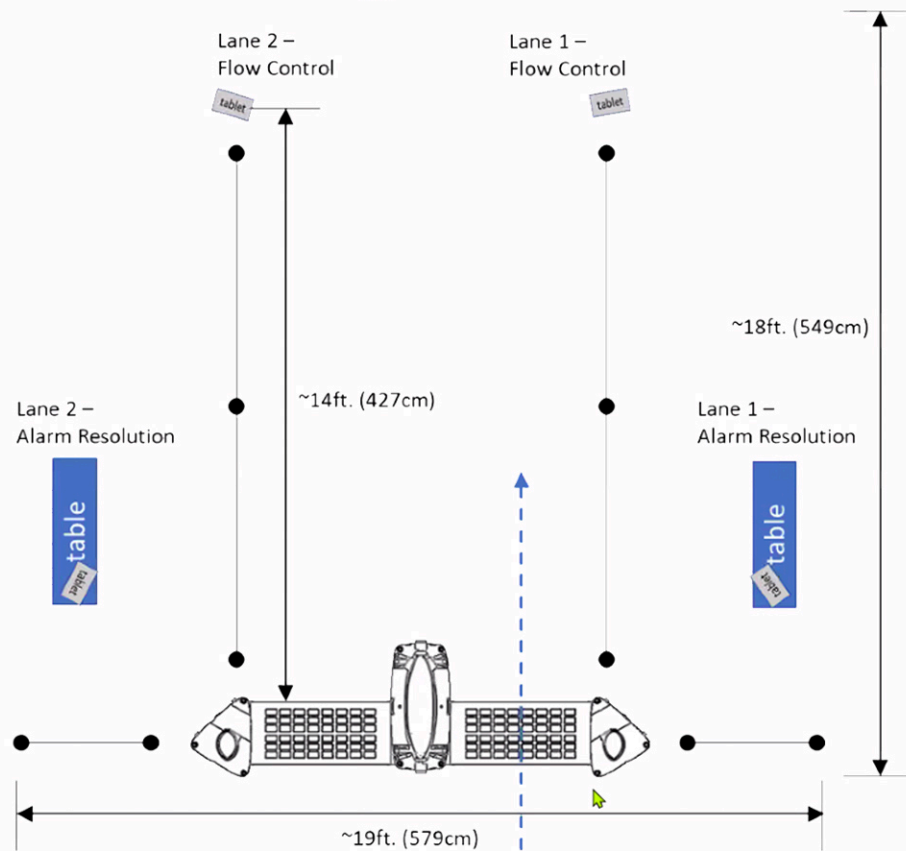


**Flexible Deployment Options:** For both indoor and outdoor screening and is easy to set up and move. Choose from six different sensitivity settings for different threat levels.



**Integration & Analytics:** Better situational awareness through the integrated cameras that provide live video feeds into an operations center. Analytics allow the number of entrants and alarm rates (staffing needs) to be monitored across the network of systems.

# Evolv Express (Dual) – Typical Footprint & Staffing

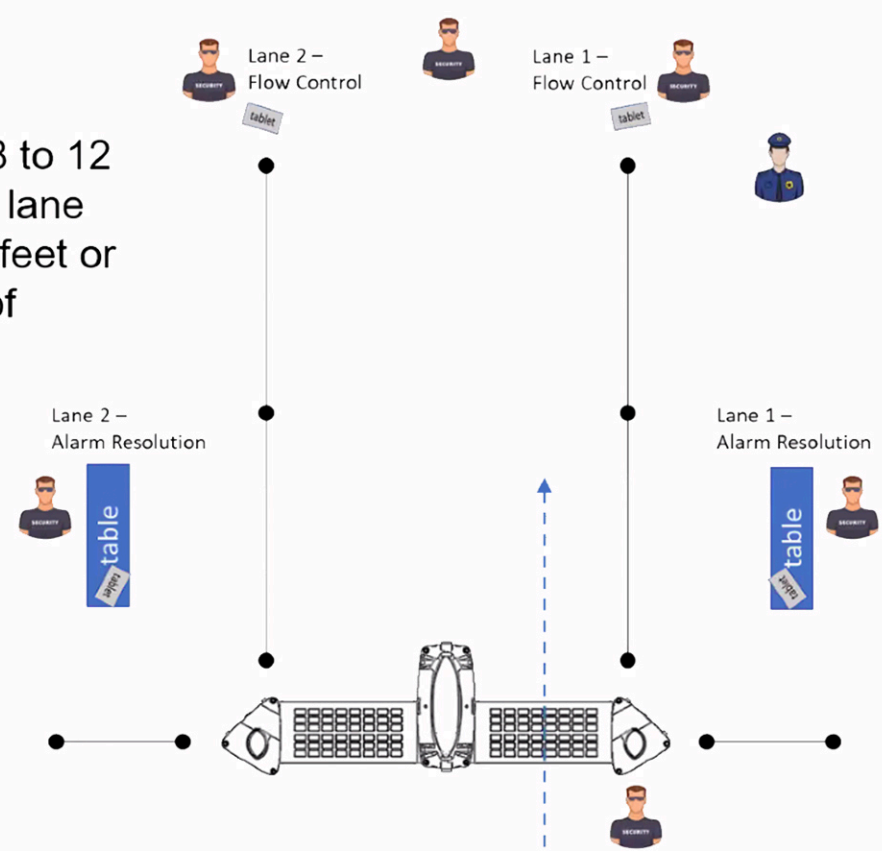


## Typical Dimensions

- Space ~19ft x 18ft
- Flow Control ~12ft to 14ft from Mat

## Ticketing

- Should have ~8 to 12 kiosks per dual lane
- Should be ~40 feet or more off back of Express

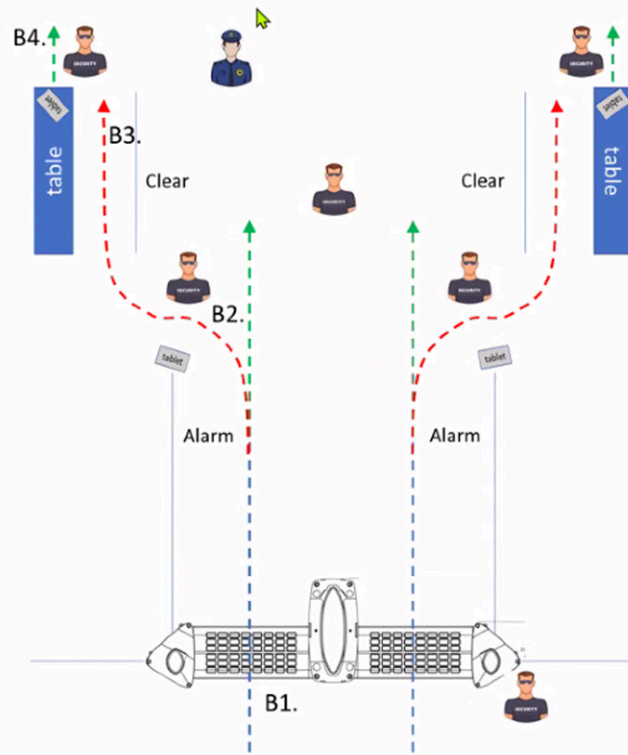


## Typical Staffing

- 1 greeter
- 1 supervisor
- 1 LEO
- 2 flow control operators
- 2 alarm resolution operators

# Sample Alarm Resolution Options

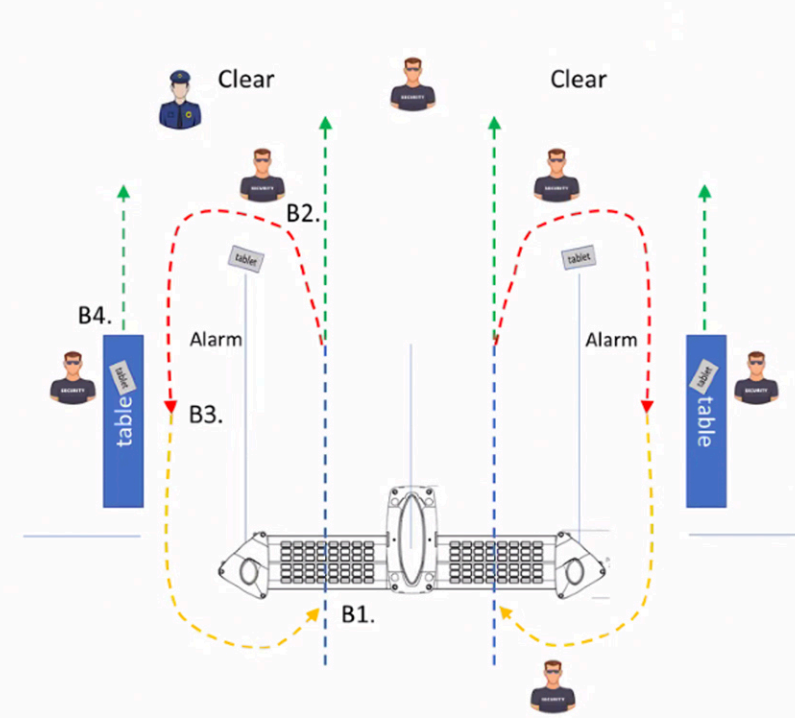
## Standard (Manual) Resolution



### Pros

- Flexibility on location
- Limited impact on flow

## “Loop Back Thru” Resolution



### Pros

- Minimizes human decisions



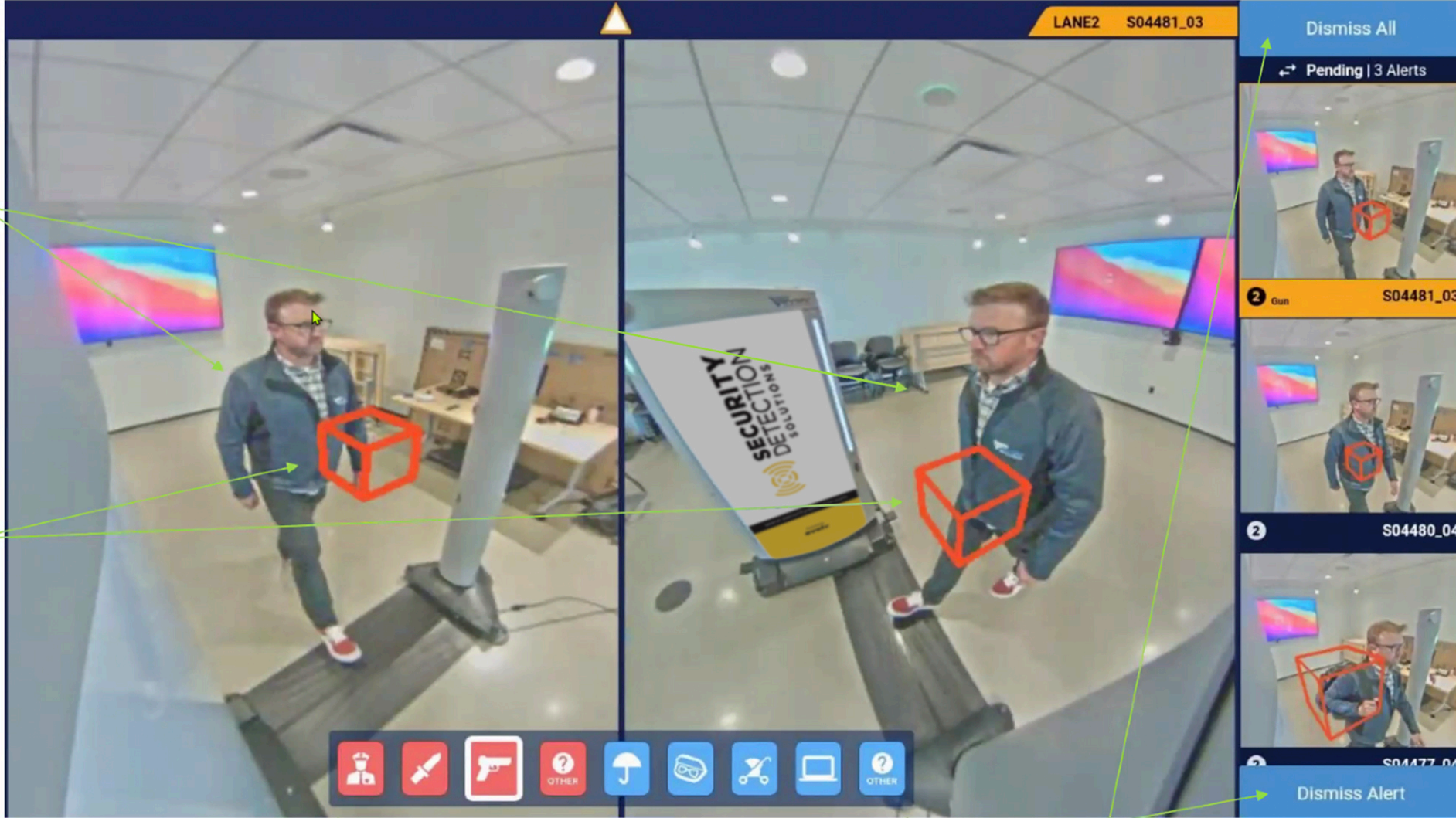
# Tablet GUI Introduction

Request Assistance Icon Allows Discrete Escalation via SMS, Email

Lane & Screening Result Identifiers

Photos Capture Visitor Walking Through, Allows Positive Matching of Visitor to Result

3D Alert Boxes Highlight Area of Interest, Allows Targeted Resolution



Thumbnails Allow User to Scroll & Select Desired Screening Result

Icons Allow User to Quickly Tag Alerts

Dismiss All & Dismiss Alert Buttons Allow User to Actively Dismiss Alerts

# Component List



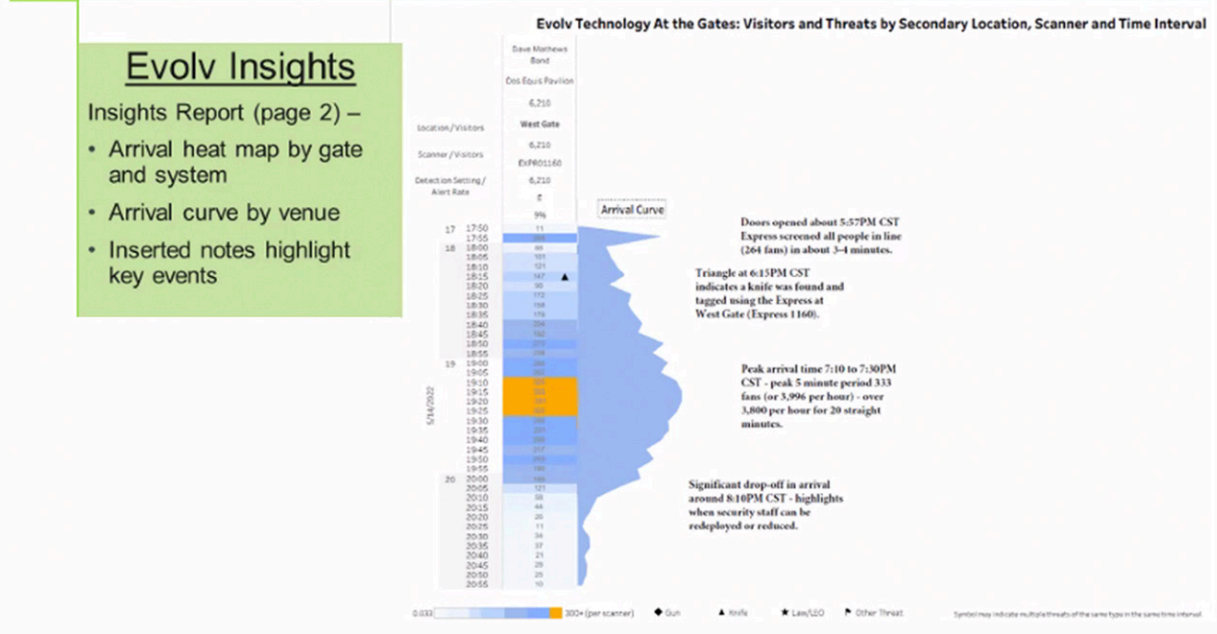
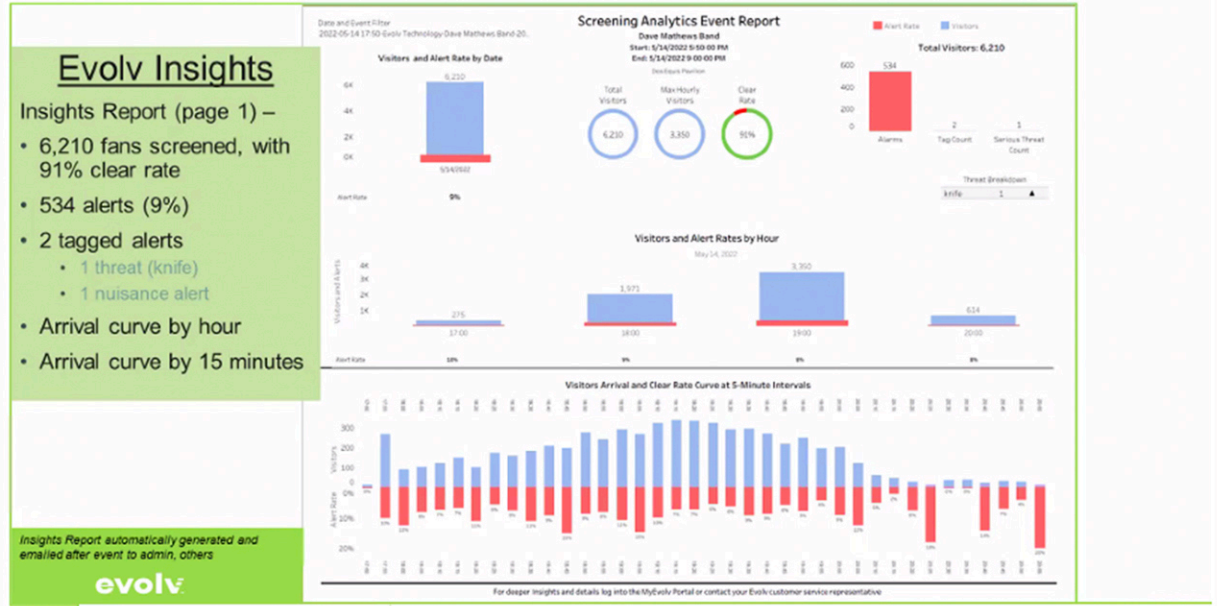
Item	Description	Qty	Notes
1	Transmitter (Tx) Tower	1	All power and external connections at base of Tx, either directly or through mat
2	Receiver (Rx) Tower	2	Only 1 Rx, left or right, for single lane configuration
3	Floor Mats with Cables	2	Only 1 mat, left or right, with cables for single lane configuration
4	Wireless Flow Control Tablets on Floor Stands	2	See note 1 below
5	Wireless Alarm Resolution Tablets on Tabletop Stands	2	See note 1 below
6	15ft Power Cord	1	Not shown, see note 1 below
7	20ft CAT6 Ethernet (PoE)	4	Optional
8	Universal Installation Kit	1	Not shown

1. The standard dual lane configuration consists of (4) wireless tablets – 2 Flow Control and 2 Alarm Resolution. Additional purchased wireless tablets, up to a total of (6), may be included. The standard single lane configuration consists of (2) wireless tablets – 1 Flow Control and 1 Alarm Resolution.



# Deployment

- Installation (~2-3 hours)
  - Unpack system
  - Set up system
  - Power on & test
  - Commission & signoff
- Training (~1-2 hours)
  - Overview of system
  - Set up/tear down of system
  - Operation of system (administrators & security leads)
- Evolv Insights (Analytics) Training (~1 hour)
  - Targeted at administrators (typically done separately)
  - Online materials
  - Training session
- Go-Live Support
  - Onsite support for event
  - Refresher training on set up/tear down (as needed)
  - Training on operation of system (security team)
  - Shadow screening operations



# Other Discussion Topics

- Evolv Express
  - Typical LN & Stadium Alarm Rate 3 to 10%
  - Typical Nuisance Alarms
    - Some Metallic Eyeglass Cases
    - Some Telescoping Umbrellas
    - Some Steel Toed Shoes
    - Some Metallic Chairs
  - Does Not Alarm on Replacement Joints (Hips, Knees, etc.)
  - Is Safe for Implanted Medical Devices
- LN & Ruoff Bag Policy
  - Is there a bag policy?
- LN & Ruoff Prohibited Item List
  - Need Plan for Other Items (Alcohol, etc.)
- LN & Ruoff COVID-19 Protocols
  - None for Fans

## CLEAR BAG POLICY



CLEAR PLASTIC, VINYL, OR PVC BAGS  
(MAX SIZE: 12"X6"X12")

SMALL CLUTCH BAGS APPROXIMATELY  
THE SIZE OF A HAND  
(MAX SIZE: 4.5"X6.5")

To reduce staff contact with guest belongings

Items ALLOWED to be brought in to the venue: (Subject to change)

- Clear plastic, vinyl or PVC tote bags no larger than 12" x 6" x 12" and/or small clutch bags (4.5" x 6.5") - small clutches do NOT have to be clear.
- Blankets
- Low profile lawn chairs with legs under 9" tall
- Cameras - nonprofessional only, no detachable lenses
- Food - in a clear, 1-gallon ziplock bag
- Umbrellas- small/parasol
- Water - up to 1 gallon in a factory sealed or empty bottle

Items NOT ALLOWED to be brought in to the venue include, but are not limited to: (Subject to change)

## PROHIBITED ITEMS

LIVE NATION



No bags or backpacks larger than 12" x 6" x 12"



Weapons of any kind, including spiked jewelry



Illegal drugs & substances, including marijuana



Alcohol, cans or glass containers



All coolers



Food or drink (except items on allowed list)



Professional audio or video recording



Fireworks, fire-starters, or open flames



High profile lawn chairs with legs over 9" tall



Animals (except service animals)



Laser pointers or selfie sticks



ANY ITEM DEEMED DANGEROUS BY THE VENUE GM OR LAW OFFICER

ALL ITEMS ARE SUBJECT TO CHANGE WITHOUT NOTICE

NEW BAG POLICY: CLEAR PLASTIC, VINYL, OR PVC BAGS (MAX. SIZE: 12"x6"x12") OR SMALL CLUTCH BAGS APPROX. THE SIZE OF A HAND. DON'T NEED TO BE CLEAR (MAX. SIZE: 4.5"x6.5")